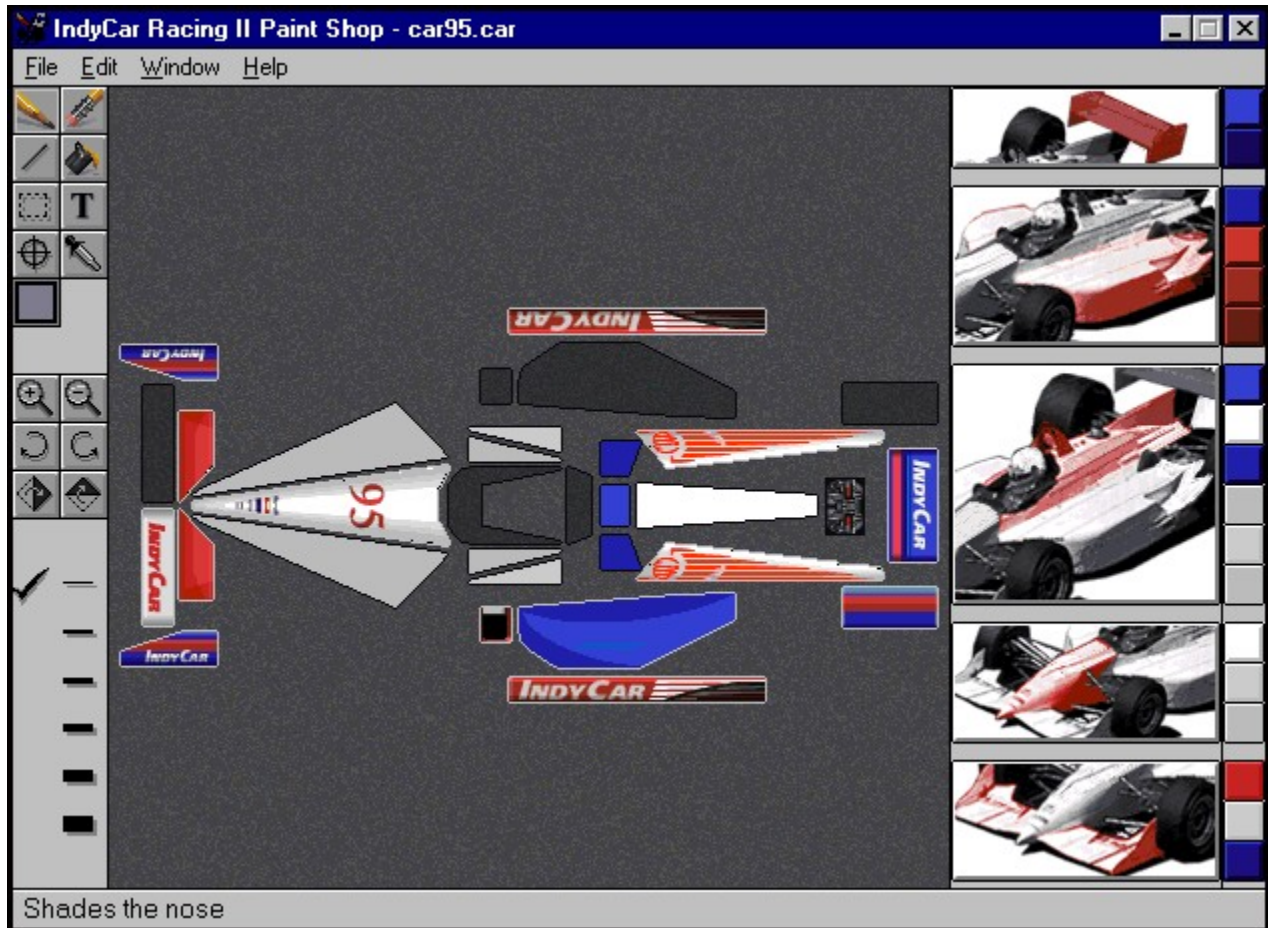


## Getting Started

The Paintshop allows you to customize the cars in IndyCar Racing II. You can paint just your own car, or create whole custom car sets. You can import decals for the cars you create, and create your own decals and export them as .pcx files. There is a wide range of functions within the Paintshop to help make it easier create custom cars and carsets. You can even customize your pit crew, giving them outfits that match your car.

The main elements of the paintshop are the Toolbar, the Color Palette, the Car Panels, and the File, Edit, and Window menus. Click on the part of the Paintshop you are interested in:



## **Color Palette**

The Color Palette selects the color you can paint the car with. Simply click on the color you want to paint with, and it is selected. You can tell what color is selected in the color palette by looking for the highlighted color in the palette itself, or the Toolbar Color Palette button.

## Toolbar

The Toolbar's 15 tools give you a great deal of control over painting your car. The toolbar is very similar to standard painting or drawing programs. Click on the part of the toolbar you are interested in:



## **The Pencil**

The Pencil draws on the panels of the Indycar just like a real pencil would. You can select different line widths using the line width selector at the bottom of the Toolbar.

To use the pencil, click your mouse on the pencil icon, then click and drag your mouse on the car to paint.

## **The Eraser**

The Eraser wipes your work away just like a chalkboard eraser. You can select different line widths for the eraser using the line width selector at the bottom of the toolbar. If you have set a base color for a panel using the Autoshade buttons or the Crosshairs Tool, the eraser will erase everything you have put “over” that color, leaving the base color intact.

To use the eraser, click your mouse on the eraser icon, then click and drag your mouse over the section of the car panels you wish to erase.

## **The Line Tool**

The Line Tool draws straight lines in the color selected in the Color Palette with the line width set on the toolbar in the line width selector. You can also draw horizontal or vertical lines with the line tool by holding down the shift key while drawing with the mouse.

To use the line tool, click on the line tool icon, then click and drag your mouse along the part of the car you wish to paint.

## **The Paint Bucket**

The paint bucket tool changes the color of whatever color it touches to the color that is selected in the Color Palette. If there are lines of the same color that intersect or touch each other and you click the paint bucket on one of the lines, all the areas of that color that touch that line are changed to the active color in the Color Palette. It sounds complex, but with a little experimentation the paint bucket is easy and very handy to use.

To use the paint bucket, select a color from the color palette, then click on the paint bucket icon and click on the section of the car you wish to change.

## **The Marquee Tool**

The marquee tool draws a selector box. You can use this box to cut or copy whatever is selected to the Clipboard, or you can drag the selection to another position on the Indycar.

To copy and paste, click your mouse on the marquee tool, then click and drag a box around a section of the car. Click the Edit menu and select Copy. Then click your mouse where you wish to copy the selection to. You may copy and paste from one car to another. To cut and paste, click your mouse on the marquee tool, then click and drag the selection to another section of the same car.



## **The Text Tool**

The Text tool allows you to place custom text on your IndyCars. When you click on the text tool, the it brings up the Text Tool Window. Type your text into the Text Tool Window.

If you want to specify a certain font for the text you typed, simply press the Font button, and select what font you want the text to be in from the Windows95 font selector dialog.

Click OK from the text tool window. The text will appear in the upper left hand corner of the car panel windows. Click and drag the text into the position you want it on the car. You can flip or rotate the text using the flipper tools and the rotate tools.

Note: You can only specify the fonts you have loaded on your system, and the font you select changes the whole text in the Text Tool Window.

## **The Eyedropper**

The Eyedropper tool is a color “grabber.” If you like a color you’ve used already, but you forgot which one it is, simply click on the color with the Eyedropper and it will be selected in the Color Palette.

To use the eyedropper, click on the eyedropper icon, then click on the color you wish to grab. That color will then be selected from the color palette.

## **The Crosshair**

The Crosshair tool changes the base color on the panels underneath whatever you may have placed onto the panels. For example, if you have a red panel with blue text over it that you think would look better with a gray panel under the text, you can just select the gray you want in the Color Palette, select the Crosshair tool, and click on the panel you want to change. The text will on top of the panel will remain unchanged, but the base color of the panel will now be gray.

## **The Color Palette Button**

The Color Palette button opens and closes the Color Palette floating window when you click on it. You can also open and close the Color Palette window by selecting it from the Window menu. The Color Palette button also shows the active color in the Color Palette. The Color Palette Button is also found in the Pit Crew and Helmet Window, and has the same function there.

## **The Magnifier Tools**

The Magnifier Tools control the magnification of the Car Panels that you see when you are painting. Clicking on the Magnifier with the “+” inside the magnifying glass zooms in and makes the panels bigger. The Magnifier with the “-“ inside the magnifying glass zooms out and makes the panels smaller. The magnifier tools make it easy to create very detailed cars by allowing you to work up close, and then zoom out to see the whole picture.

## **The Rotate Tools**

The Rotate Tools allow you to rotate imported graphics or areas you selected with the Marquee tools. You can rotate selections or graphics clockwise or counterclockwise in increments of 90 degrees. This is useful if you have imported a graphic and you need to rotate it before it will fit where you want it.

To use the Rotate Tools, first select a section with the marquee tool or the text tool (or by pasting in a selection or importing a graphic), then click on the rotate counterclockwise or clockwise icons.

## **The Flipper Tools**

The Flipper Tools “flip” the graphic or Marquee selection either horizontally or vertically. This feature is useful if you want to place the same graphic on each side of the car. If you just place it on either side, in the Car Preview window you’ll see that on one side the graphic is upside down. You need to flip the selection on the side where it is wrong in order for it to match the other side.

To use the flipper tool, select the part you wish to flip with the marquee tool, then click on either the flip horizontal or flip vertical icon.

## **Line Width Selector**

The Line Width selector area of the toolbar lets you choose between six different line widths. The active line width is marked by a check mark next to it. The Line width selector controls the width of the lines that the Pencil, the Line Tool, and the Eraser draw.

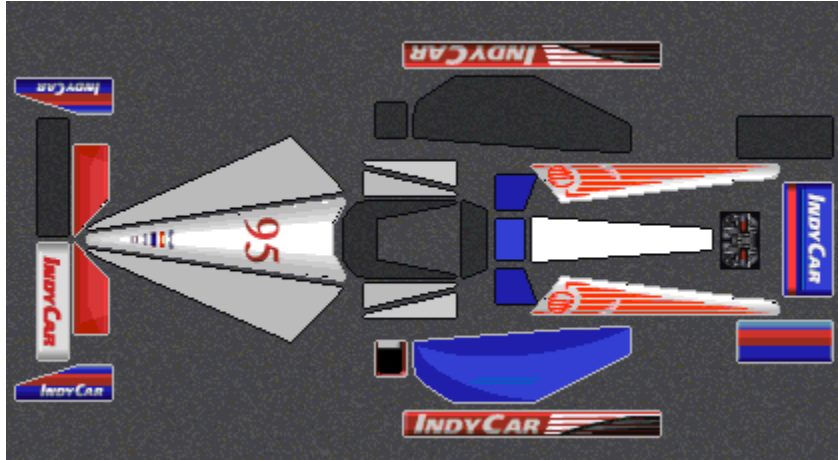
To select a line width, click your mouse on the line width you wish to use.



## Car Panels

There are only certain areas of an Indycar available to paint. These are the Car Panels. They are the canvas on which you work. There are some panels to which you can apply base color but not draw or place decals on. The dark gray panels are “mirror panels.” The right front wing panel, the right central fairing, and the right rear wing panel are mirrors of the corresponding left panels of the car. These areas of the Indycar reflect what their matching left panel looks like. This makes it easier for you to create symmetrical paint jobs.

Each area of the Car Panel area has a Help Entry. Click on the part of the window you are interested in:



## **Mirror Panels**

Mirror panels are not paintable. Only the panels they reflect are paintable. This makes it easier to create symmetrical paint jobs.

## **Front Wing Panels**

These panels are the front wing panels. With the exception of the front wing mirror panel, they are all fully paintable.

## **Nose Cone Panels**

These panels are the “nose” of the IndyCar body. The middle panel is fully paintable, but the two side panels only allow a base color.

### **Cockpit Rim Side Panels**

These panels are part of the cockpit rim or cowling of the IndyCar. These panels allow only a base color.

### **Cockpit Rim Rear Panels**

These panels are part of the cockpit rim or cowling of the IndyCar. These panels allow only a base color.

## **Sidepod Panels**

These panels make up the sidepods of the IndyCar. They are fully paintable, but may only have a symmetrical appearance. Whatever you paint on the lower sidepod panel will be mirrored on the upper sidepod's mirror panel.

## **Side Panels**

These panels are the sides of the IndyCar. They are fully paintable, but in order to have the top (or right) side of the car match the bottom (or left) side of the car, you may need to paint one, select it with the marquee tool, copy it to the other panel, and then flip it with the rotate or flip tools so that it will match. If you're not worried about a perfectly symmetrical paint job, then you don't need to match the left and right side panels.



## **Spine Panel**

This panel is the rear spine of the IndyCar. This panel only allows a base color.

## **Spine Side Panels**

These panels are the sides of the rear spine of the IndyCar. They are fully paintable.

**Air Intake**

This panel is the rim of the engine air intake. It is reflected on the other side of the car in it's mirror panel.

## **Windshield and Cockpit Cowling**

The windshield and inner cockpit cowling are not paintable.

## **Engine Panel**

This panel is the engine of the IndyCar. It is not paintable.

## **Rear Wing Panels**

These panels make up the rear wing of the IndyCar. They are fully paintable, but the side wing panels must be symmetrical, so whatever is painted on the lower side wing panel will be reflected in the upper side wing panel.

## Paint Car Buttons

### **Autoshade Buttons**

Each of these 5 buttons is a picture of the part of the Indycar it paints. These are called the Autoshade buttons. The area that is painted by that button is highlighted. Clicking on an Autoshade button will paint that area of the car the color that is active in the Color Palette. The Autoshade button also automatically shades that area of the car with a range of colors drawn from the same row of colors in the Color Palette as the active color. This autoshade feature makes it easy to create matching, shaded areas of the car without tediously matching colors by trial and error.

### **Paint Buttons**

To the right of the autoshade buttons are several buttons which paint just a portion of the highlighted area within each Autoshade button. Use these buttons when you want to manually pick the colors within each area of the autoshade button area.

You can preview what your car will look like after you paint it in the Car Preview window.

Note: You may have to move the color palette to have access to the autoshade and paint buttons. To do so, click on the bar at the top of the color palette and move it to another part of the screen.

## Menus

The four menus in the Paintshop are the File Menu, the Edit Menu, the Window menu, and the Help Menu.

Click on the part of the menu bar you are interested in:

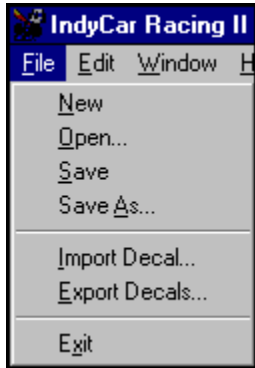




## File Menu

The File menu controls all the standard Windows 95 file management functions. You can also import and export .pcx files for use as decals from the File Menu.

Click on the part of the File Menu you're interested in:



**File/New**

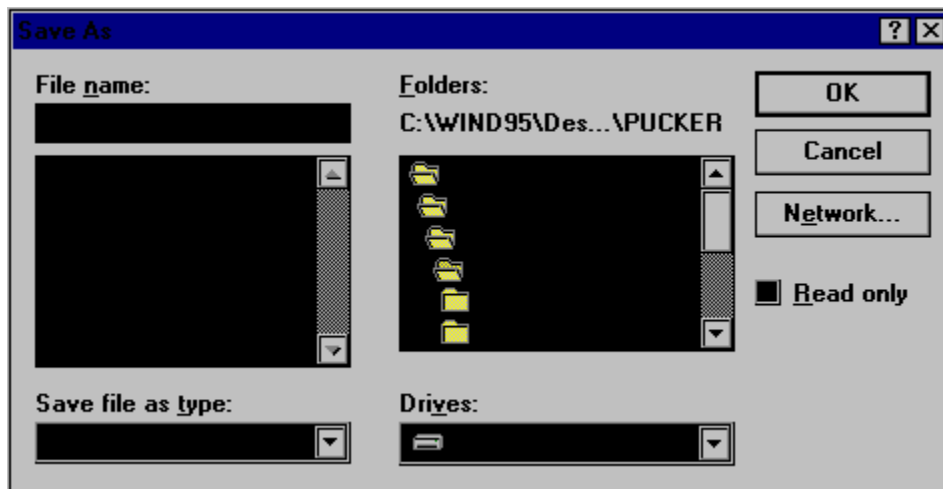
The New command begins a new car (.car) file. If you currently have a car file open and select the New command you are prompted to save your changes.

**File/Open**

The Open command allows you to open an existing car (.car) file.

## File/Save

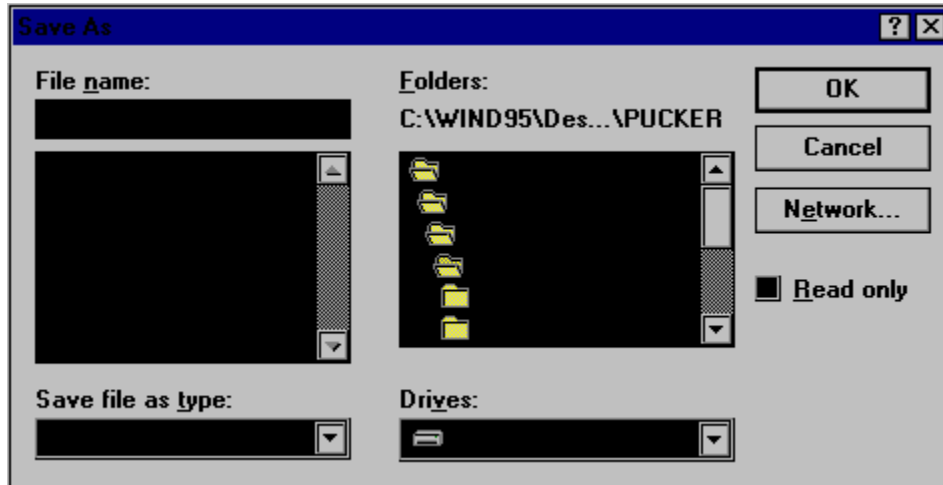
The Save command allows you to save your painted car as a car (.car) file.



## File/Save As...

The Save As...command allows you to save the current car file under a different name. This is useful in saving a car file at different stages in its development. It will save your car as a car (.car) file.

Click on the part of the Save As... dialog you are interested in:

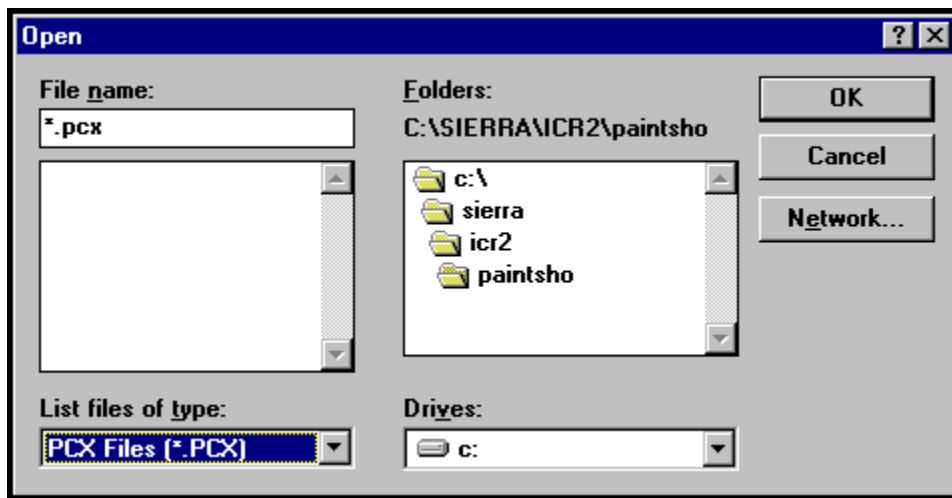


## File/Import

The Import feature allows you to import graphics files into the Paintshop and paint them onto your cars. These graphics can be any thing you want to put on your car, provided that they are in PCX (.pcx) file format. You can create PCX files in most graphics or painting programs or you can use a third-party converter to convert your graphics into PCX files.

After Importing a file as a decal, it will appear as a selected item which you can then position on the car and manipulate using the tools on the Toolbar.

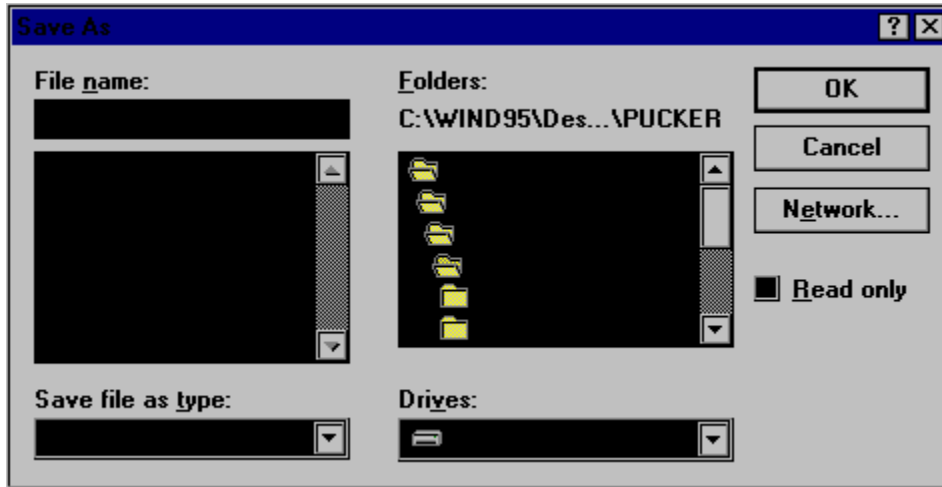
The Import dialog is basically the same as the Open dialog, only in Import you can select graphics to import. Click on the part of the Import Menu you are interested in:



## File/Export

The Export feature allows you to export portions of your car as decals for use on other cars or simply as graphics. You can export single decals by selecting a portion of your car and choosing the Export command, or you can export the whole car as a full decal you can later place on another car.

The export command summons the Save As dialog. All the functions for export are basically the same as the Save As dialog, only you can select between .PCX and .BMP files. Click on the part of the File Export submenu you are interested in:



**File/Exit**

The Exit command closes and exits from the Paintshop.



## Edit Menu

The Edit menu allows you access to all of the standard Windows95 edit functions. You can cut, copy, paste, and undo. There is also a Clear menu item for clearing various items within the Paintshop.



Clear/Decals clears the current car of its decals.

Clear/Body clears the current car of its body color.

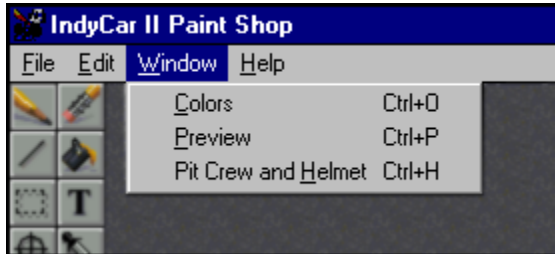
Clear/Suits clears the Pit Crew suits of any color you gave them.

Clear/Helmet clears the Helmet of any color or shading you gave it.

## The Window Menu

The Window menu controls the color palette window, the Car Preview window, and the Pit Crew/Helmet window. Selecting an item in the Window Menu will make that item active. Active items will have a check mark beside them in the pull-down menu.

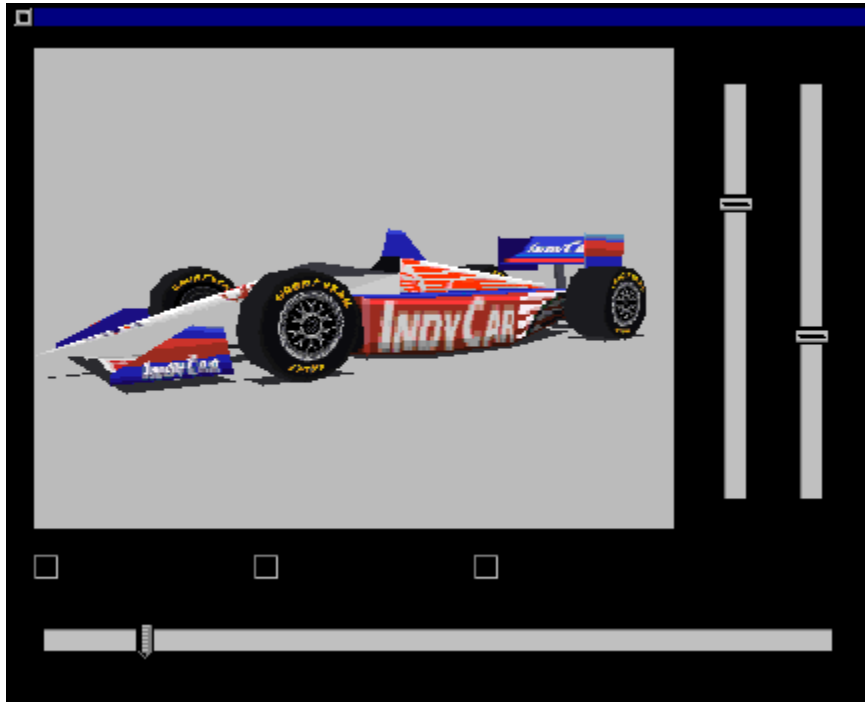
Click on the part of the Window Menu you are interested in:



## The Car Preview Window

The Car Preview window lets you see what your car will look like at the track. There are several controls in the car preview window. You can hide the controls so only the car picture shows in the window. You can set the car in the window to rotate automatically, and you can turn the car's decals on and off. You can also rotate the car manually with the slider bar at the bottom of the Car Preview window, as well as control the angle and size of the car in the window with the tilt and zoom controls. To open or close the Car Preview window from the menu bar, select it from the Window Menu. You can also close the Car Preview window by click on the X in its upper right hand corner.

Click on the part of the window you are interested in:



## **Car Preview**

This window displays your car in its current state. If you paint your car while the car preview window is open, it will update “on the fly.” This way you will always be able to see what your car looks like as you are working on it.

## **Tilt & Zoom**

These controls set the angle and size of the car in the window. Adjusting the slider bars controls each of the two functions. By changing the size and angle of the car you can get a good idea of how your car will look from almost any angle or distance.

## **Show Controls**

Show Control hides and displays the Rotate, Tilt, and Zoom sliders. When the box is checked, the sliders are displayed and active. When it is unchecked, they are inactive and hidden. This feature allows you to keep the Preview window active while painting without hogging all of your monitor's real estate.

**Auto Rotate**

The Auto-Rotate feature automatically rotates the car in the preview window so that you can see how it will look on all sides. When the box is checked, the car will rotate, when unchecked the car remains stationary.

## **View Decals**

The View Decals checkbox turns the decals on and off in the Preview window. This allows you to see what the car will look like without textures on at the track. If the box is checked, the decals will be displayed. If unchecked, the decals will be turned off in the Preview window.



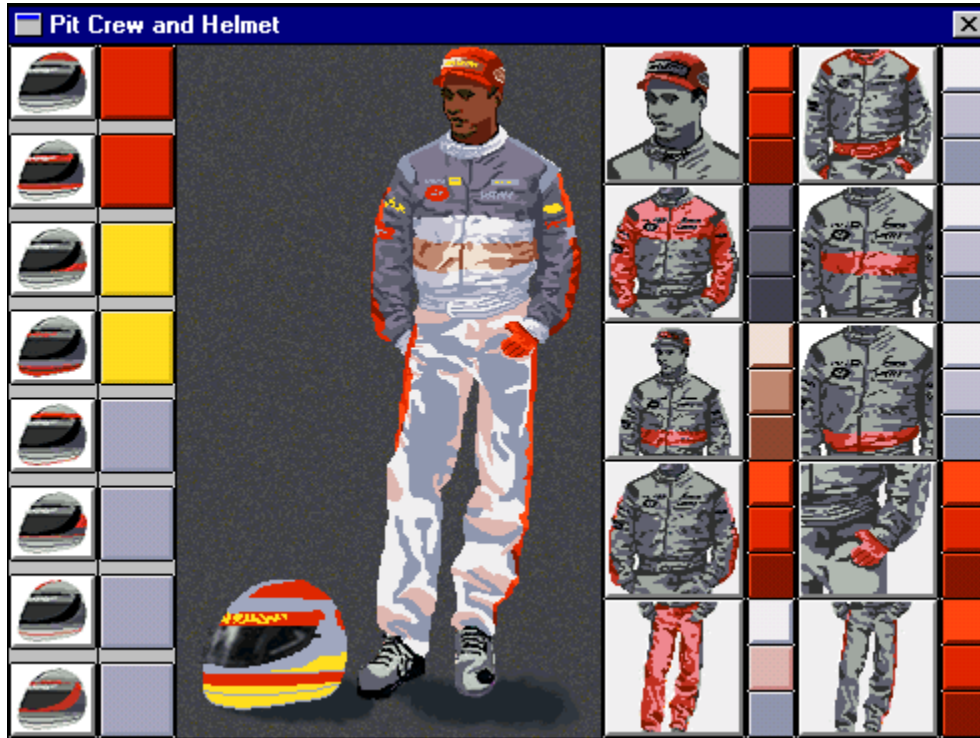
## **Rotate Slider**

The Rotate slider lets you manually rotate the car in the Preview window. This feature is useful for looking at the car from different angles without having to wait for the car to rotate all the way around with the Auto Rotate feature.

## Pit Crew and Helmet

The Pit Crew and Helmet Window allows you to customize the uniforms of your Pit Crew and your helmet. You can't place decals on the Pit Crew or your helmet, but you can give them custom color schemes to match your car.

Click on the part of the Pit Crew and Helmet Window that you're interested in:



## **Helmet Buttons**

The Helmet Buttons show a helmet with one area or strip of the helmet highlighted. The highlighted color shows the area of the helmet that button controls. Clicking on the button autoshades that stripe's color to a slightly lighter shade of the active color in the Color Palette. The colored area next to the Helmet Button then displays the color of that strip. You can also set the color of that stripe by clicking on the colored area. The Helmet Buttons also control the color of the decals on the uniform of the Pit Crew.

### **Pit Crew and Helmet Preview**

This area previews what the finished helmet and pit crew uniform will look like at the track. The eyedropper icon is always active in the Pit Crew and Helmet window to assist you in matching colors. Simply click on the color you want to match in the Preview window, and the color will become active in the Color Palette.

## **Pit Crew Buttons**

The Pit Crew buttons show a portion of the Pit Crew uniform with an area on the uniform highlighted. The highlighted color shows the area of the uniform the three buttons next to each picture control. Clicking on one of the three buttons will set a portion of the highlighted area to whatever the active color is on the Color Palette. Clicking on the button itself will set all three areas of that button to the active color.

## Technical Support



### Sierra On-Line Technical Support

Automated Technical Support Line:  
**1-206-644-4343**

Sierra On-Line offers a 24-hour Automated Technical Support line with recorded answers to the most frequently asked technical questions. To access this service, call (206) 644-4343, and follow the recorded instructions to find your specific topic and resolve the issue. If this fails to solve your problem, you may still write, or fax us with your questions, or contact us via BBS.

U.S. Technical Support

**Sierra On-Line  
Technical Support**

**P.O. Box 85006  
Bellevue, WA 98015-8506**

**Main: (206) 644-4343**

**Fax: (206) 644-7697**

**8:15 a.m. - 4:45 p.m. PST,  
Monday-Friday**

Sierra On-Line U.S. Technical Support is also available through:

**Sierra BBS: U.S. (206) 644-0112 or U.K. (44) 1734 304227**

**CompuServe: GO SIERRA**

**America Online: Keyword Sierra**

**U.K. Technical Support**

**Main: (44) 1734-303-171 (Monday through Friday, 9:00AM-5:00PM)**

**Fax: (44) 1734-303-362**

France Support Technique

**Tel : (33) 1-46-01-46-50 (7 jours sur 7 de 9h à 21h)**

**Fax : (33) 1-46-31-71-72**

Deutschland :

**Kundendienst Tel : (49) 06103 / 99 40 40 (9 -19 Uhr, Montag - Freitag)**

**Kundendienst Fax : (49) 06103 / 99 40 35 24 h / Tag**

**Mailbox(BBS) : (49) 06103 / 99 40 41 24 h /Tag**

Soporte Tecnico, Spain:

**Tel : (34)-1-764-39-69**

**Fax : (34)-1-381-08-39**

Servizio Tecnico, Italy:

**Contattare il vostro distributore**

**Hints**

**U.S. Hints:**

**1-900-370-5583**

**\$.75 per minute (must be 18 years or older, or have parental permission).**

**You may also contact Direct Sales for a hint book.**

**On-Line Hints and Support:**

**Access Sierra's BBS through Compuserve by typing GO SIERRA**

**Access the Sierra Forum on America On Line with the keyword: SIERRA**

**Hint Line, France:**

**33-1-36-68-46-50 (hint line)**

**2,23F la minute. (France métropolitaine seulement)**

**Hint Line, United Kingdom:**

**Old Games hint line: 0-1734-304-004 (within the UK)**

**Old Games hint line: 44-1734-304-004 (outside the UK)**

**New Games hint line: 0-891-660-660 (within the UK only)**

**For adventure games released after January 1st, 1993. Charged 39p/minute cheap rate, 49p/minute at other times. Maximum call length 7.5 minutes. Maximum charge cheap rate £2.92, £3.67 other times. Must have permission of the person who pays the phone bill before calling (line available in the UK only).**

**Hint Line, Deutschland:**

**(44) 0190 / 515 616**

**24h /Tag (nur in Deutschland verfügbar,1,20 DM pro Minute)**

**Hint Line, Italy:**

**Contattare il vostro distributore**

**Pistas, Spain:**

**Tel : (34)-1-764-39-69**

**Fax : (34)-1-381-08-39**

**Old Sierra Hint Line:**

**For adventure games released up to December 31st, 1992. Calls are charged at normal telephone rates.**

**by Bill Baker and Gary Brown**

**File Name**

Enter the name of the file you wish to open or save your file as here.



## **File Name List**

This list shows the names of the files in the current directory. You can select files from this list with the mouse to open them or put their name in the File Name List.

## **File Type Menu**

This menu lets you specify which type of file you wish to save your file as or the type of file you wish to open or import into the Paintshop,

## **Folder Menu**

This menu displays the current open directory and its place in the directory structure. You can use this menu to peruse through the directory structure of your computer.

## **Drives**

Lets you navigate through multiple drives available to your computer. This would include your floppy drive, your CD-ROM drive, or any other drive hooked up to your computer.

## **Network**

This menu lets you navigate through drives you are connected to via a network.

**Read Only**

Checking this box will let you "lock" files when you save them, making them available only to be read, but not altered. This helps prevent the casual damage or destruction of your painted IndyCars.

**OK Button**

Accepts and saves changes made to the current dialog.

**Cancel Button**

Cancels and closed the current dialog, taking no action.



## Importing Your Custom Cars into IndyCar Racing II

Creating customized cars into IndyCar Racing II is great fun. There's nothing like taking the corkscrew at Laguna Seca in your own custom-painted Indycar. Getting the cars you paint in the Paintshop into IndyCar Racing II's Car Set is a simple process.

### **Step One:**

Load IndyCar Racing II and go to the Driver Info dialog. From there you can launch the Paintshop and paint a car. The Paintshop will launch with the car that is currently selected in the window in Driver Info all ready to paint, so you might want to select the car you wish to customize first.

Note: if you want to paint a car, but don't want to risk changing the default Car Set you're currently racing with by saving your mistakes into it, open the Car Sets dialog and make a copy of the current Car Set using the "duplicate" feature. You might also want to make the default Car Set "read-only" while you're there. For more information on the Car Sets dialog, go to the [Car Sets Help Screen](#)

### **Step Two:**

With the Paintshop launched from Driver Info, paint your car. When you are finished painting the car, choose "Exit" from the File menu to leave the Paintshop. You will be prompted to save your changes. Click "Yes" if you wish to save your newly painted cars into the current Car Set. If you click "No," then no action will be taken and your changes will not be saved. If you click "Cancel" then no action is taken and the Paintshop will not close. For more information on the Paintshop and how to use it, open the main screen for [Paintshop Help](#)

### **Related Topics:**

[Car \(.car\) Files](#)

[Importing Car Files into IndyCar Racing II](#)

## **The Car (.car) File**

Suppose you want to paint a car, but don't want to create a complete car set? This is why the Car (.car) file was created. The .car file contains only one car, and you can easily import the car file into the current Car Set when you're ready to. Car files make managing your Car Set a little easier, and allows users to trade Car Sets over the Internet or online that much easier. Creating a car file is easy. First, you have to launch the Paintshop as a stand-alone application, not through the Driver Info dialog in IndyCar Racing II. Find the Paintkit.exe in the same directory as Windy.exe and launch it by double-clicking on its icon.

Now that the Paintshop has opened as a stand-alone application, you can begin painting the blank car that the Paintshop opens with, and save the finished car with the File/Save function when you are ready. For more information on the Paintshop and how to use it, start with the main [Paintshop Help](#)

For more information on how to import the .car file into IndyCar Racing II, open the [Importing Car Files into IndyCar Racing II Help Screen](#).

### **Importing a Car (.car) File into the current Car Set**

Now that you wish to import your finished .car file into your Car Set, all you have to do is launch the Paintshop from the Driver Info dialog with the current Car Set selected in the Car Sets dialog. Since the Paintshop loads the car that is currently selected in the Driver Info dialog, you should select the car you wish to replace in your Car Set from the list in Driver Info before launching the Paintshop with the Paintshop button.

Now that you have the Paintshop open with the car you wish to replace loaded, select File/Open from the File menu and load the .car file you wish to import to the current Car Set. This loads the car file into the Paintshop. To import your changes to the current Car Set, simply choose File/Exit to close the Paintshop and click "Yes" when asked if you wish to save your changes. You have successfully imported a .car file into the currently selected Car Set.

#### **Related Topics:**

[Car Sets](#)

[Driver Info](#)

## **Decals**

IndyCar Racing II's Paintshop comes with a number of decals you may use to customize your car. Some are authentic Indycar sponsors, and others are simply interesting and colorful graphics you might find useful in your own designs. The decals are not installed into your IndyCar Racing II directory, but instead are left in a folder called "Decals" on the IndyCar Racing II CD, where they will always be accessible.

